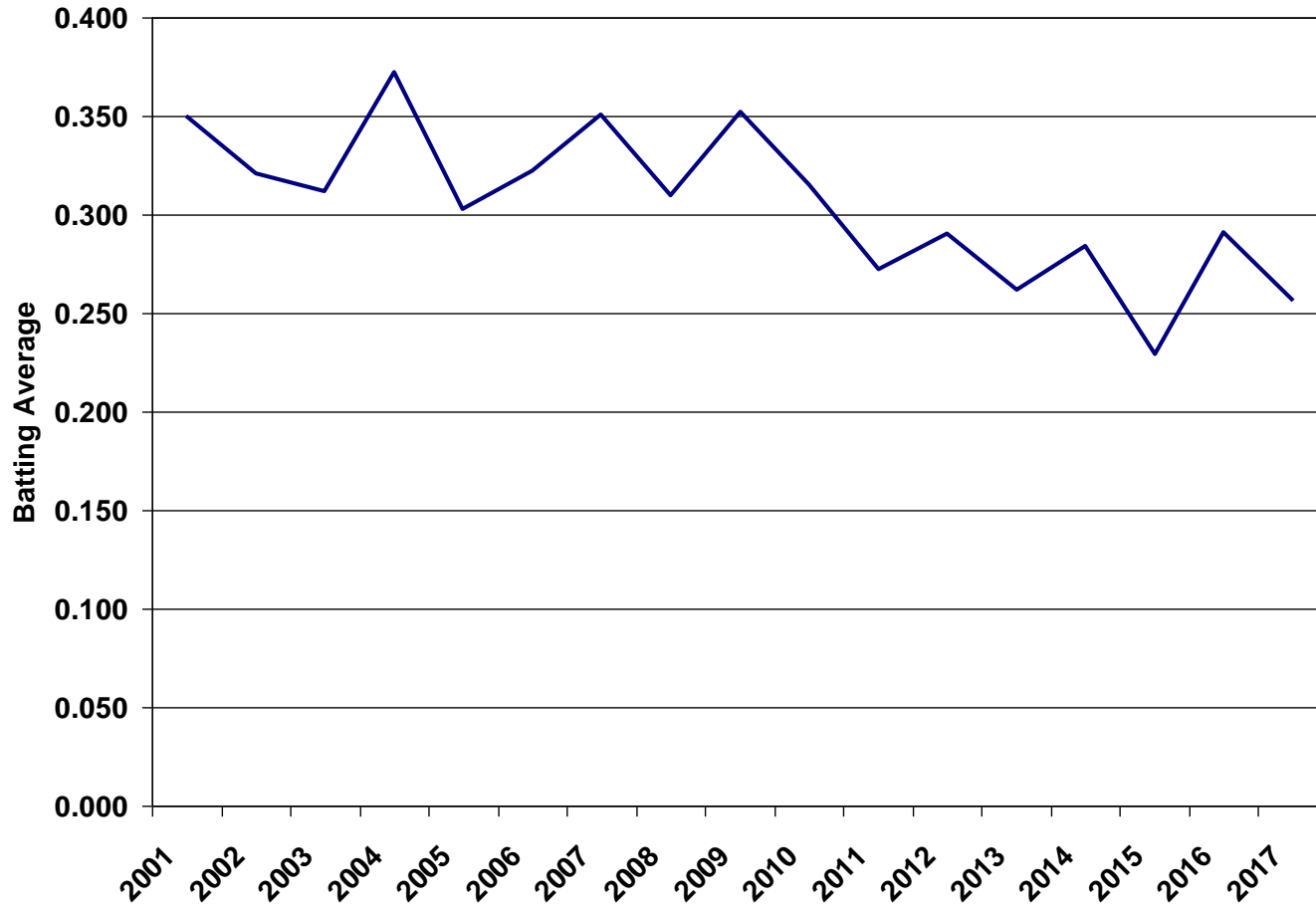


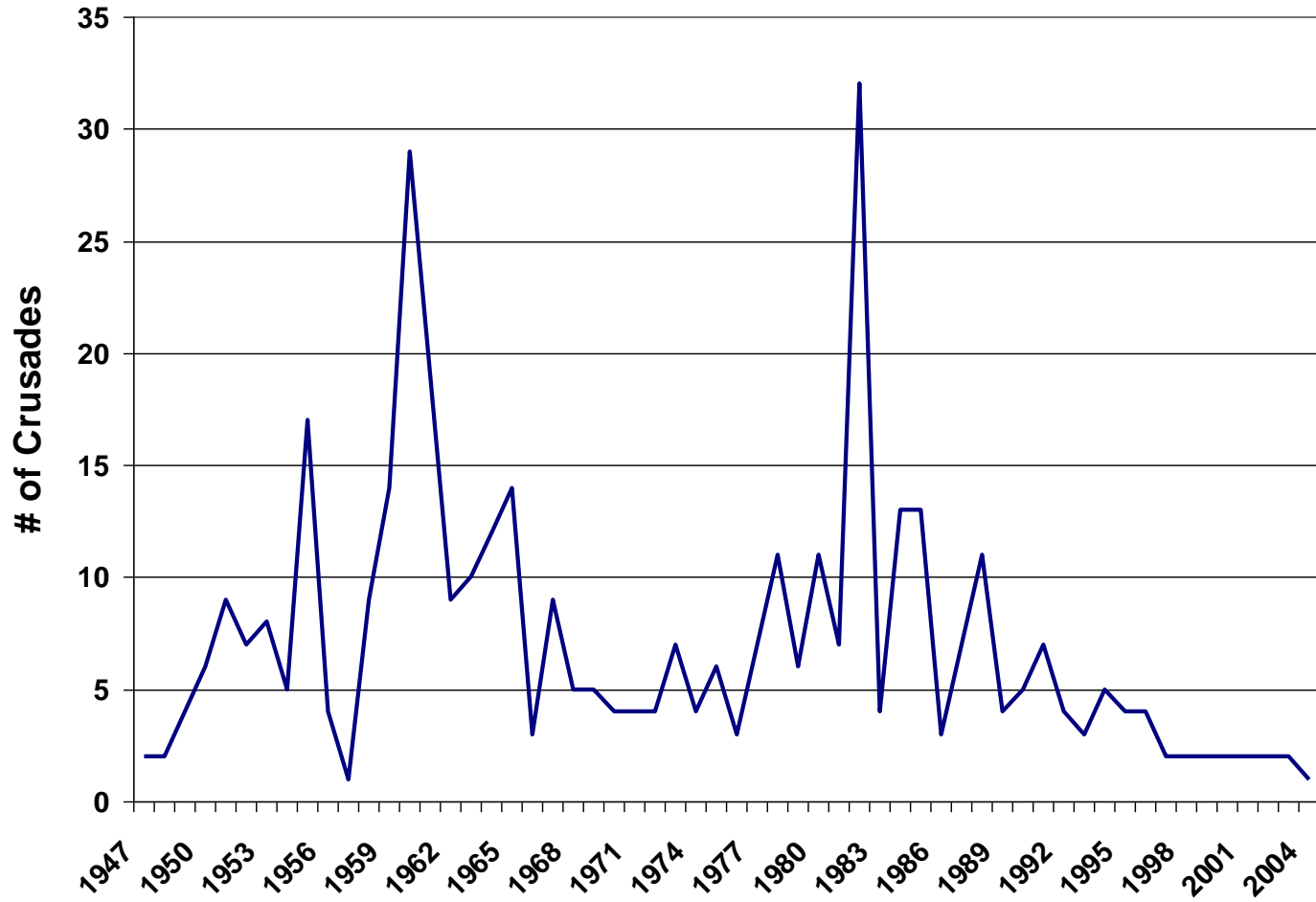
Running with Endurance

Nehemiah 12

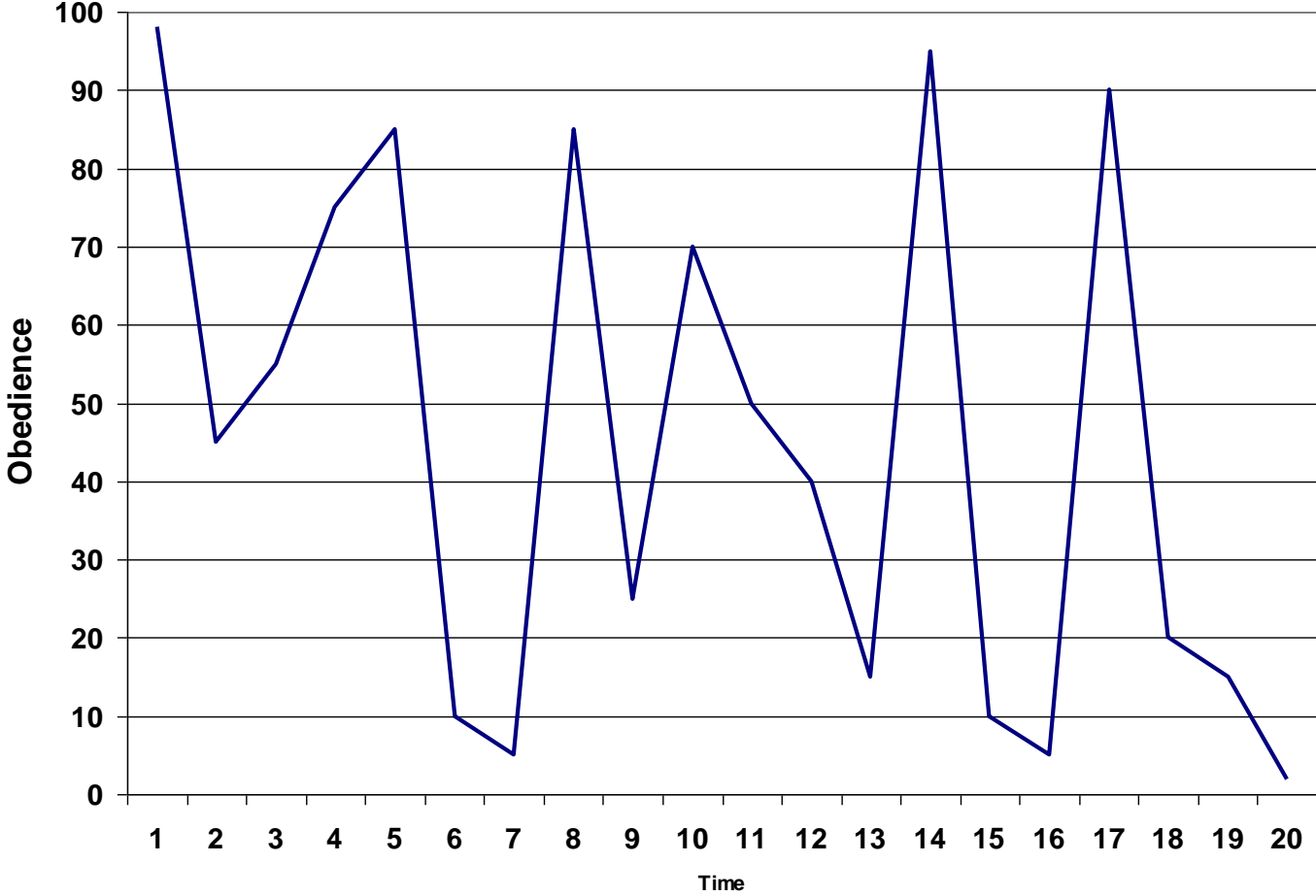
Ichiro Suzuki



Billy Graham Crusades by Year



Corporate Faithfulness



Overview

- **Some observations from Nehemiah 12**
- **Some inferences about the post-Nehemiah era**
- **Some applications for our lives and our church**

Some observations from Nehemiah 12

- **The chapter: Implementing the practice of worship.**
- **The chapter has the overall tone of a business record.**
- **We can see loose parallels to the functioning of our own worship community.**

Some inferences about the period (400 years) between the Old and New Testaments

- **The loss of fellowship with God that occurred in the later history of the Old Testament was not repeated in the inter-testament period.**
- **The inter-testament worship community remained in place in spite of significant pressures of Hellenization and colonization.**

Some applications for our lives and our church

- The Pharisees kept faith, but they didn't get it right.
- We can't overstate or exaggerate the importance of leaders who are fully yielded to God.
- What will we become as a church?